



HARLECH

EST **FOODSERVICE** 1972

GWASANAETH BWYD

CHRISTMAS





E-mail
service@harlech.lls.com

Orders
01766 810 810

Website
harlech.co.uk

Address
Parc Bwyd, Llanystumdwy,
Criccieth, Gwynedd LL52 0LJ

Terms and conditions

All products are sold subject to availability and Harlech Foodservice Ltd's terms and conditions of sale. Some images show 'serving suggestions' for general purpose only. Please ask us for clarification if required. Whilst we make every effort to ensure these details are correct, errors may occasionally occur. Goods are subject to VAT where applicable. E&OE.





C

CHRISTMAS 2023

Welcome to our Christmas brochure for 2023. Let your Christmas sparkle with our range, bursting with great ideas for Christmas and New Year.

We can take care of all your needs for the festive period from starters through to delicious desserts.

Order up to 10pm online.
Delivery up to 6 days a week.

-  FROZEN
-  VEGETARIAN
-  VEGAN
-  GLUTEN FREE

	Wed 20th Dec	Thurs 21st Dec	Fri 22nd Dec	Sat 23rd Dec	Xmas Eve 24th Dec	Xmas Day 25th Dec	Boxing Day 26th Dec
Deliveries	Normal	Normal	Normal	Normal	No Deliveries	No Deliveries	No Deliveries
Office Hours	9am-5pm	9am-5pm	9am-5pm	9am-2pm	CLOSED	CLOSED	1pm-5pm
Click 'N' Collect	10am-4pm	10am-4pm	10am-4pm	10am-12pm	CLOSED	CLOSED	CLOSED
Order Online for Next Day*	Until 10pm	Until 10pm	Until 10pm	Delivery Wednesday	Delivery Wednesday	Delivery Wednesday	Until 10pm

	Wed 27th Dec	Thurs 28th Dec	Fri 29th Dec	Sat 30th Dec	New Years Eve 31st Dec	New Years Day 1st Jan	Tue 2nd Jan	Wed 3rd Jan
Deliveries	Normal	Normal	Normal	Normal	No Deliveries	No Deliveries	Normal	Normal
Office Hours	9am-5pm	9am-5pm	9am-5pm	9am-2pm	CLOSED	1pm-5pm	9am-5pm	9am-5pm
Click 'N' Collect	10am-4pm	10am-4pm	10am-4pm	10am-12pm	CLOSED	CLOSED	10am-4pm	10am-4pm
Order Online for Next Day*	Until 10pm	Until 10pm	Until 10pm	Delivery Tuesday	Delivery Tuesday	Until 10pm	Until 10pm	Until 10pm

B

BREAD & SOUP



FOCACCIA 40x100g

❄️ ROSEMARY
Code: 8404

❄️ OLIVE & OREGANO
Code: 2827

❄️ TOMATO & BASIL
Code: 9643

❄️ MINI WHITE TIN LOAF
Code: 1257 / 48x55g

❄️ MINI MULTIGRAIN TIN LOAF
Code: 4707 / 48x55g

❄️ MINI ASSORTED ROLLS
Code: 50302 / 3x35x35g



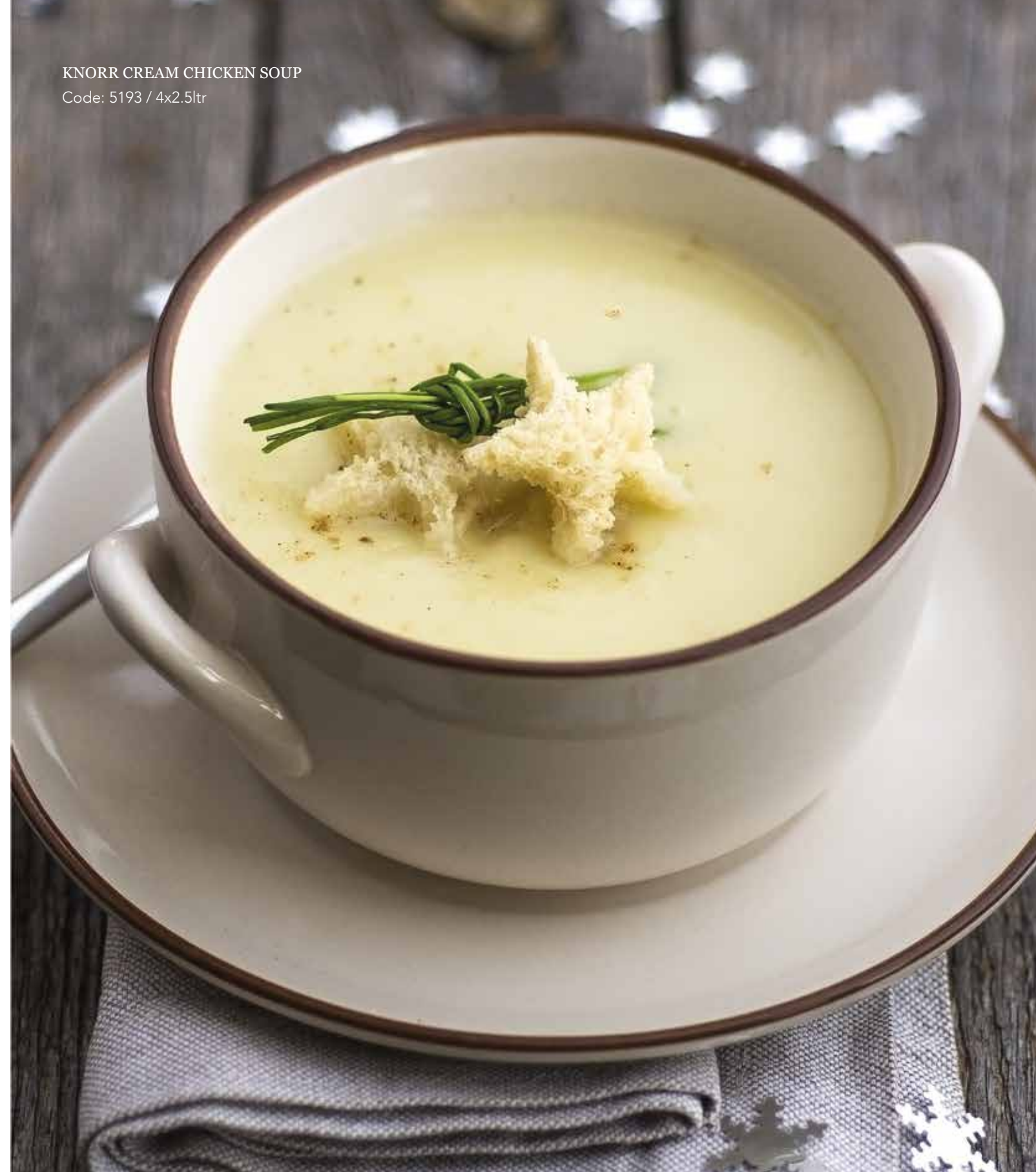
KNORR CARROT & CORIANDER SOUP
Code: 33666 / 4x2.4ltr

KNORR TOMATO SOUP
Code: 2305 / 4x2.5ltr

KNORR CREAM CHICKEN SOUP
Code: 5193 / 4x2.5ltr

KNORR LEEK & POTATO SOUP
Code: 7170 / 4x2.5ltr

KNORR CREAM CHICKEN SOUP
Code: 5193 / 4x2.5ltr



P

PÂTÉ

DUCK & ORANGE PÂTÉ
Code: 66024 / 1x500g

BRUSSELS PÂTÉ
Code: 78712 / 1x500g

❄️ CHICKEN LIVER PÂTÉ WITH
BRANDY & HERBS
Code: 4536 / 1x450g

❄️ COINTREAU & ORANGE PÂTÉ
Code: 3698 / 1x450g

❄️ DUCK PÂTÉ WITH APRICOT
& BRANDY
Code: 51280 / 1x450g

❄️ WELSH DRAGON'S VENISON
LIVER PÂTÉ
Code: 3342 / 1x450g

❄️ CHICKEN LIVER PÂTÉ WITH
TEQUILA & CRANBERRY
Code: 17821 / 1x450g

❄️ SALMON & DILL PÂTÉ
Code: 73991 / 1x450g

❄️ CHICKEN LIVER, MUSHROOM
& GARLIC PÂTÉ Code: 4172 / 1x455g

❄️ PEPPERED MACKEREL PÂTÉ
Code: 8233 / 1x455g

❄️ CHICKEN LIVER PÂTÉ PIPING BAG
Code: 56840 / 3x500g

❄️ BRANDY & HERB PÂTÉ PIPING BAG
Code: 40524 / 3x500g

❄️ PÂTÉ PIPING BAG RED LENTIL
& SUNDRIED TOMATO WITH CHILLI
Code: 13381 / 3x500g

CHICKEN LIVER PÂTÉ WITH BRANDY & HERBS
Code: 4536 / 1x450g ❄️



F

FISH

❄️ SMOKED HADDOCK &
MOZZARELLA FISHCAKES
Code: 40773 / 18x115g

❄️ SMOKED HADDOCK &
GF MOZZARELLA FISHCAKES
Code: 10771 / 24x100g

❄️ 26-30 RAW KING PRAWNS
Code: 32244 / 1x1kg

❄️ EXTRA LARGE PRAWNS
Code: 72208 / 1x2kg

❄️ 150-250 MSC PRAWNS
Code: 43535 / 1x2kg

❄️ GARLIC & HERB PRAWNS
Code: 25193 / 1x500g

❄️ SALMON & DILL GOURMET FISHCAKES
Code: 23562 / 24x114g

❄️ THAI COD GOURMET FISHCAKES
Code: 19104 / 24x114g

❄️ THAI COD PRAWN FISHCAKES
GF Code: 15223 / 24x114g

❄️ COD & SEABASS FISHCAKES
Code: 5511 / 20x100g

GARLIC & HERB PRAWNS

Code: 25193 / 1x500g ❄️



- ❄️

SMOKED SALMON SLICES

Code: 43802 / 1x200g
- ❄️

D-CUT SIDE SMOKED SALMON

Code: 22192 / 1x1kg
- ❄️

CRAB MEAT

Code: 14915 / 1x454g
- ❄️

MUSSELS IN SHELL

Code: 5398 / 5x1kg
- ❄️

COCKLES

Code: 2118 / 1x454g
- ❄️

PANKO COATED SQUID STRIPS

Code: 41635 / 1x1kg
- ❄️

WHOLE BLANCHBAIT

Code: 3705 / 1x454g
- ❄️

MSC COATED WHITEBAIT

Code: 71347 / 1x454g
- ❄️

WHOLE WHITEBAIT

Code: 67365 / 1x454g
- ❄️

SALMON FILLETS

Code: 82388 / 1x10 / 140-170g

Code: 80721 / 1x10 / 170-200g

Code: 74490 / 1x10 / 200-230g
- ❄️

SEABASS FILLETS

Code: 49601 / 1x20 / 90-120g

Code: 62823 / 1x1kg / 130-190g
- ❄️

SEAFOOD BASKET

Code: 10655 / 12x200g



B

BUFFET & STARTERS

❄️ LUXURY TEMPTATION CANAPES

Code: 11494 / 1x45

An assortment of thaw 'n' serve canapes,
5 each of 9 varieties;

- Blini Sandwich with Cream Cheese, Smoked Salmon and Lemon
- Cream Cheese with Basil and Prawn on Spinach Bread
- Cream Cheese with Horseradish and Crayfish on Lemon Basil Cake
- Bresola and Cheese with Mustard, Honey and Sesame Seeds on Granary Bread
- Semi Dried Cherry Tomato, Goat's Cheese and Pecan Nut on Walnut Bread
- Courgette, Mini Cheese and Ham Roll and Red Pepper on Tomato Bread
- Comte Cheese, Semi Dried Apricot and Almond Poppy Seed Profiterole
- Crab, Cucumber and Trout Roe Poppy Seed Profiterole
- Fig, Brie and Pea Semolina on Spiced Bread



CHICAGO STYLE CANAPES

Code: 1796 / 1x48 ❄️

- Smoked Salmon, Lemon flavoured Cheese & Cucumber mini brioche
- Ham, Fig Butter & Pistachio Olive Bread
- Vegetables on Nordic Bread
- Smoked Trout & Cucumber on Black Bread
- Fourme d'Amberts Blue Cheese, Fig & Pear on Walnut Bread
- Prawn, Basil flavoured Cheese on White Bread
- Mandarin & Prune with Smoked Duck on White Bread



INDIAN SNACK SELECTION
Code: 63514 / 3x20 (V) ❄️
Vegetarian Indian savoury pastry snacks.
Onion Bhajis, Vegetable Pakoras and Vegetable
Samosas. 3x20 of each.

❄️ PUNJABI MEAT SAMOSAS
Code: 41648 / 25x75g

❄️ MINI VEGETABLE SAMOSAS
Code: 21417 / 120x30g

❄️ MINI ONION BHAJIS
Code: 5768 / 50x35g

❄️ CHICKEN GYOZA DUMPLINGS
Code: 82673 / 1x600g

❄️ LARGE SEEKH KEBAB
Code: 72249 / 25x70g

❄️ MINI DUCK SPRING ROLLS
Code: 4723 / 100x20g

❄️ MINI VEGETABLE SPRING
ROLLS Code: 43541 / 6x40x25g

❄️ LARGE VEGETABLE SPRING
ROLLS Code: 41084 / 50x50g

❄️ CHINESE DUCK BON BON
Code: 87508 / 50x30g

❄️ CRISPY ENOKI MUSHROOMS
Code: 16757 / 1x1kg

❄️ MOROCCAN FALAFEL
Code: 31751 / 1x1kg

❄️ MOROCCAN CAULIFLOWER
BITES Code: 45284 / 3x1kg
(VE)
(GF)

MINI DUCK SPRING ROLLS
Code: 4723 / 100x20g ❄️



❄️ **BREADED BUTTERFLY KING PRAWNS**
Code: 4291 / 1x500g

❄️ **TEMPURA TORPEDO PRAWNS**
Code: 1972 / 1x500g

❄️ **PRAWNS IN FILO PASTRY**
Code: 2568 / 1x500g

❄️ **KATSU PRAWNS RAW**
Code: 79742 / 1x500g

❄️ **40-70g CRISPY BATTERED GURNARD**
Code: 37288 / 1x1kg

❄️ **BREADED SQUID RING**
Code: 2154 / 1x700g

❄️ **SWEET CHILLI SQUID**
Code: 22518 / 1x1kg

❄️ **SALT & PEPPER SQUID CHUNKS**
Code: 66428 / 1x1kg





❄️ HOT & SPICY CHICKEN WINGS
Code: 67212 / 1x1kg

❄️ BEER BATTERED ONION RINGS
Code: 30165 / 1x1kg

❄️ BREADED BRIE PLANKS
Code: 54231 / 1x1kg

❄️ BREADED GREEN JALAPENO
Code: 12273 / 1x1kg

❄️ HALLOUMI FRIES
Code: 32377 / 1x1kg

❄️ MAC 'N' CHEESE BITES
Code: 39496 / 1x1kg

❄️ MOZZARELLA STICKS
Code: 81882 / 1x1kg

❄️ MOZZARELLA POCKETS
Code: 29552 / 52x38g

MOZZARELLA POCKETS
Code: 29552 / 52x38g ❄️



- ❄️ **CRANBERRY & BRIE WONTON**
Code: 9911 / 50x18g
- ❄️ **MINI SCOTCH EGGS**
Code: 1833 / 1x80
- ❄️ **BUFFET PORK PIES**
Code: 38366 / 24x65g
- ❄️ **MINI STEAK & ALE PIES**
(GF) Code: 36380 / 24x90g
- ❄️ **GOATS CHEESE & FIG TART**
(GF) Code: 35242 / 36x150g
- ❄️ **POTATO LONGBOATS**
Code: 9217 / 4x20
- ❄️ **CHEESE & BACON POTATO SKINS**
Code: 3668 / 1x1.9kg
- ❄️ **MEDIUM VOL-AU-VENT**
Code: 44701 / 1x18



- ❄️ **MANGO & BRIE PARCEL**
Code: 5841 / 25x30g
- ❄️ **FIG & GOATS CHEESE PARCEL**
Code: 7846 / 25x30g
- ❄️ **12" MEDITERRANEAN QUICHE WHOLE**
Code: 66437 / 1x12"
- ❄️ **BROCCOLI & STILTON QUICHE**
Code: 4718 / 1x10pp
- ❄️ **WELSH CHEESE & LEEK QUICHE**
Code: 3755 / 1x10pp
- ❄️ **WELSH CHEESE & LEEK QUICHE**
UNCUT Code: 23706 / 1x1.5kg
- ❄️ **QUICHE LORRAINE**
Code: 4662 / 1x10pp

MINI PIE SELECTION

Code: 69050 / 1x48 ❄️

A mixed pack of ready-cooked mini pies with golden short crust pastry. 24 of each flavour.

- British beef and ale topped with black pepper.
- British chicken and tarragon topped with parsley.



M

MEAT

BEEF

ROLLED TOPSIDE
Code: 80192 / 2-4kg
Code: 7287 / 4-6kg
Code: 9766 / Av 9kg

WELSH ROLLED TOPSIDE
Code: 43319 / 2-4kg 🇬🇧
Code: 40516 / 4-6kg 🇬🇧

✳️ **Av 2kg BEEF TOPSIDE**
Code: 74345 / per kg

✳️ **Av 3kg BEEF TOPSIDE**
Code: 86428 / per kg

8kg+ SILVERSIDE ROLLED
Code: 9919 / per kg



CHICKEN

CHICKEN SUPREME BONE-IN
Code: 9759 / 1x5

CHICKEN SUPREME FRENCH TRIMMED Code: 19033 / 1x5

CHICKEN FILLETS
Code: 9991 / 1x5kg
Code: 3851 / 2x5kg

✳️ **CHICKEN LIVER**
Code: 9334 / 1x2.27kg

TURKEY

✳️ **1.5-2.5kg TURKEY BREAST**
Code: 35142 / per kg

TURKEY BREAST
Code: 23191 / 2-3kg
Code: 30006 / 4-6kg

✳️ **Av 7kg TURKEY BUTTERFLY**
Code: 3307 / per kg



PORK

PORK LOIN BONED
& ROLLED RINDLESS

Code: 25951 / 2-3kg

Code: 8447 / 4-5kg

4-5kg PORK BELLY
BONED & ROLLED


Code: 7804 / per kg

LAMB


8oz UK LAMB RUMP


Code: 67496 / 5x227g

1.5-2kg WELSH LAMB LEG

Code: 3611 / per kg 

Av 2kg WELSH LAMB
SHOULDER BONED & ROLLED

Code: 9735 / per kg 

 LAMB SHANKS

Code: 33485 / 12x2x450g

GAMMON

WHOLE HORSESHOE GAMMON

Code: 7109 / per kg

WHOLE GAMMON CONVERTOR

Code: 6772 / per kg

 GAMMON SHANK/KNUCKLE

Code: 12331 / 1x350g





PRIME CENTRE CUT BACK BACON
Code: 6228 / 1x2.27kg

STREAKY BACON RINDLESS
Code: 76053 / 1x2.27kg

SMOKED STREAKY BACON
Code: 68141 / 1x2.27kg

SMOKED PANCETTA LARDONS
Code: 53335 / 1x1kg

PREMIUM PORK SAUSAGES
Code: 57902 / 1x2.5kg

BLACK PUDDING STICK
Code: 3780 / 1x1.36kg

❄️ **PORK CHIPOLATA**
Code: 61338 / 1x2.5kg

❄️ **PORK CUMBERLAND CHIPOLATA**
Code: 53605 / 1x2.5kg

❄️ **PIGS IN BLANKETS**
Code: 31227 / 1x50

❄️ **PREMIER PIGS IN BLANKETS**
Code: 16497 / 1x1kg

❄️ **SAUSAGE MEAT**
Code: 2849 / 1x454g



VEGAN & VEGETARIAN

❄️ (VE) RED PEPPER, BEAN
& AUBERGINE CHILLI
Code: 78971 / 15x300g

❄️ (VE) LUXURY CHESTNUT ROAST
(GF) Code: 25377 / 24x200g
*Mix of rice and mushroom topped with
cranberry, pumpkin seeds and chestnut pieces.*

❄️ (VE) KERALAN CAULIFLOWER
& RED PEPPER CURRY
(GF) Code: 77441 / 12x340g

❄️ (VE) SWEET POTATO &
SPINACH CURRY
Code: 55651 / 12x350g

❄️ (V) MEDITERRANEAN
VEGETABLE RISOTTO
Code: 43279 / 12x340g



❄️ (V) MUSHROOM & CRANBERRY
WELLINGTON
Code: 16451 / 12x195g

❄️ (VE) BUTTERNUT SQUASH, CRANBERRY
& RED ONION TAGINE
Code: 20452 / 12x350g

❄️ (VE) SWEET POTATO ROULADE
(GF) Code: 81651 / 16x155g

❄️ (V) SPINACH RICOTTA CANNELLONI
Code: 35415 / 12x400g

❄️ (V) GOATS CHEESE & FIG TART
(GF) Code: 35242 / 36x150g

❄️ (VE) CRISPY ENOKI MUSHROOMS
Code: 16757 / 1x1kg

❄️ (VE) JACKFRUIT BAO BUNS
Code: 31183 / 1x20

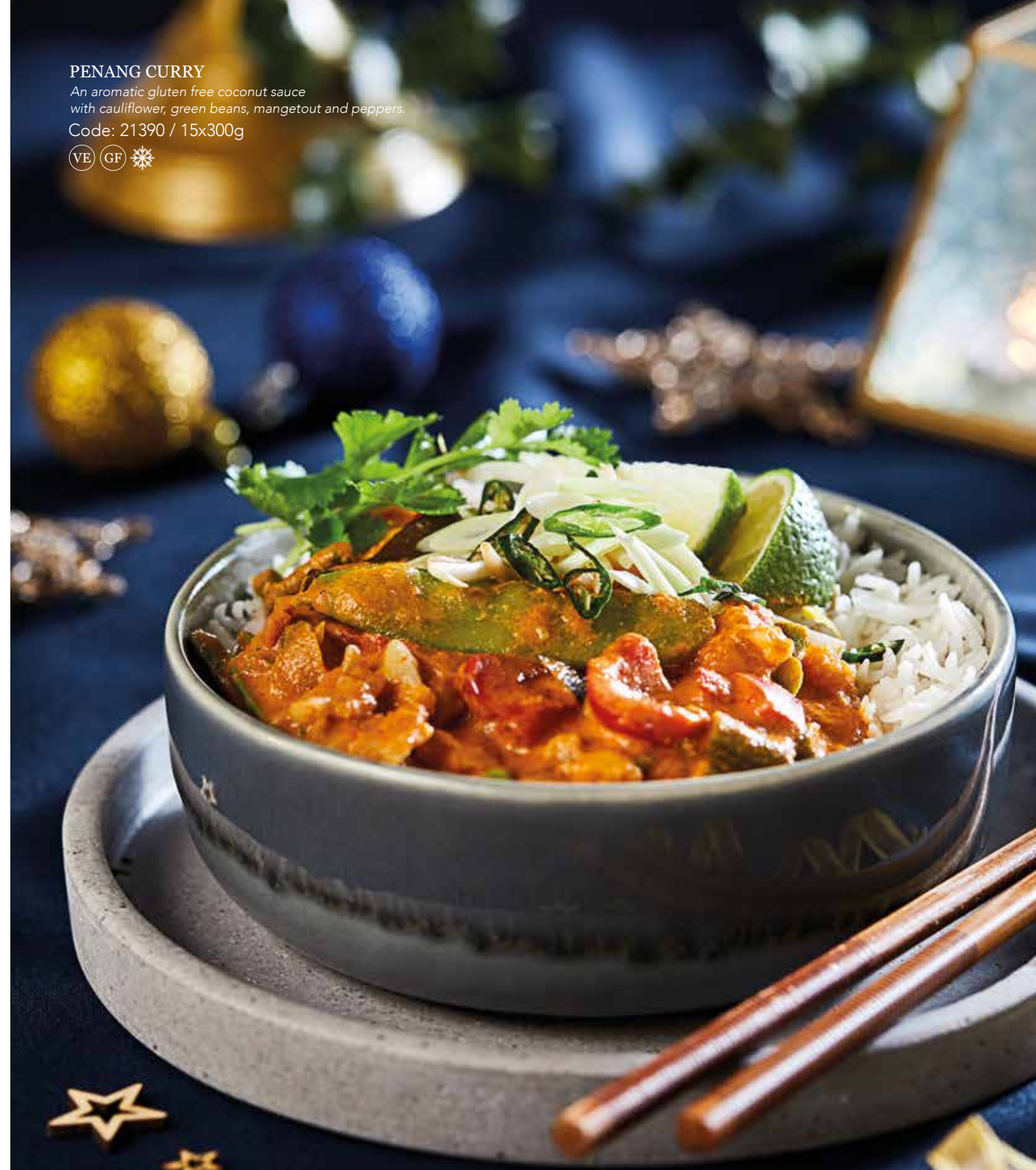
❄️ (V) MOROCCAN FALAFEL
Code: 41319 / 2x700g

PENANG CURRY

*An aromatic gluten free coconut sauce
with cauliflower, green beans, mangetout and peppers.*

Code: 21390 / 15x300g

(VE) (GF) ❄️



V

VEGETABLES

- ❄️ HONEY GLAZED PARSNIPS
Code: 88414 / 1x1kg | 43717 / 10x1kg
- ❄️ ROASTING VEGETABLES MIX
Code: 42493 / 1x1kg | 13954 / 10x1kg
- ❄️ DICED SWEDE
Code: 85154 / 1x1kg | 29076 / 10x1kg
- ❄️ CUT LEEKS
Code: 1035 / 1x1kg | 79387 / 10x1kg
- ❄️ BUTTON SPROUTS
Code: 16031 / 1x1kg | 32111 / 10x1kg
- ❄️ MEDIUM SPROUTS
Code: 48288 / 1x1kg | 79552 / 10x1kg

- ❄️ GARDEN PEAS
Code: 81491 / 1x1kg | 11528 / 10x1kg
- ❄️ PETIT POIS
Code: 59189 / 1x1kg | 77533 / 10x1kg
- ❄️ WHOLE GREEN BEANS
Code: 65471 / 1x1kg | 51092 / 10x1kg
- ❄️ SLICED GREEN BEANS
Code: 5725 / 1x1kg | 51945 / 10x1kg
- ❄️ BROCCOLI FLORETS
Code: 55142 / 1x1kg | 60605 / 10x1kg
- ❄️ CAULIFLOWER FLORETS
Code: 61991 / 1x1kg | 13841 / 10x1kg
- ❄️ BABY CARROTS
Code: 8864 / 1x1kg | 11146 / 10x1kg
- ❄️ SLICED CARROTS
Code: 8145 / 1x1kg | 63192 / 10x1kg

MEDIUM SPROUTS ❄️
Code: 48288 / 1x1kg | 79552 / 10x1kg



P

POTATOES

- ❄️ BANNISTERS ROAST POTATOES
Code: 48342 / 1x2.27kg | 68777 / 4x2.27kg
- ❄️ COUNTRY RANGE ROAST POTATOES
Code: 47266 / 1x2.5kg | 87697 / 4x2.5kg
- ❄️ GARLIC & ROSEMARY ROAST POTATOES
Code: 64917 / 1x2kg
- ❄️ MASHED POTATO
Code: 61956 / 1x2.5kg | 17317 / 4x2.5kg
- ❄️ MAMMAS MASH POTATO
Code: 3913 / 1x2.25kg | 17053 / 4x2.25kg
- ❄️ HASH BROWN HALO
Code: 36741 / 4x2.5kg
- ❄️ POTATO CRUNCHIES
Code: 41474 / 4x2.5kg



HASH BROWN HALO
Code: 36741 / 4x2.5kg ❄️



S

SAUCES & ACCOMPANIMENTS

KNORR CHEESE SAUCE MIX
Code: 6521 / 1x5ltr

ESSENTIAL CUISINE

BEEF GLACE

Code: 11768 / 1x600g

SIGNATURE BEEF JUS

Code: 41616 / 1x1ltr

PREMIER LAMB JUS

Code: 7273 / 1x1kg

PREMIER VEAL JUS

Code: 4539 / 1x1kg

WILD MUSHROOM GLACE

Code: 35207 / 1x600g

WILD MUSHROOM SAUCE BASE

Code: 88538 / 1x800g

PAXO SAGE & ONION STUFFING
Code: 3202 / 1x2.5kg | 4308 / 2x2.5kg

SAGE & ONION STUFFING
Code: 38818 / 1x3kg

❄️ **PORK STUFFING BALLS**
Code: 3846 / 160x25g

❄️ **LUXURY VEGETABLE STUFFING BALLS**
Code: 55934 / 160x25g

❄️ **3" YORKSHIRE PUDDINGS**
Code: 22007 / 1x60

❄️ **4" YORKSHIRE PUDDINGS**
Code: 40860 / 1x60

❄️ **8" YORKSHIRE PUDDINGS**
Code: 19609 / 1x30

YORKSHIRE PUDDING MIX
Code: 61057 / 1x3.5kg

BISTO LOW SALT GRAVY GRANULES
Code: 2358 / 1x1.8kg

BISTO VEGETABLE GRAVY GRANULES
Code: 2808 / 1x25ltr

BISTO ORIGINAL GRAVY GRANULES
Code: 48700 / 1x25ltr

BISTO CHICKEN GRAVY GRANULES
Code: 17167 / 1x25ltr

Ⓜ️ **GRAVY MIX**
Code: 82947 / 1x2kg

ORIGINAL GRAVY MIX
Code: 3300 / 1x1.8kg

CRANBERRY SAUCE
Code: 44034 / 1x2.55kg

3" YORKSHIRE PUDDINGS
Code: 22007 / 1x60 ❄️



D

DESSERTS

BRANDY SAUCE

Code: 6537 / 1x1ltr | 12448 / 12x1ltr

❄️ GINGERBREAD LAYER CAKE

Code: 64472 / 1x16pp

A cake base with ginger, cinnamon and nutmeg, filled and covered with soft buttercream and decorated with swirl drizzles of maple flavour caramel syrup on top.



CHRISTMAS LOAF PUDDING

Code: 58663 / 1x1.25kg

INDIVIDUAL CHRISTMAS PUDDINGS

Code: 79666 / 36x100g

❄️ UNBAKED MINCE PIES

Code: 55131 / 1x100



❄️ SPICED PEAR, TOFFEE & CRANBERRY NAKED CAKE

Code: 20260 / 1x14

❄️ JAFFA MOUNTAIN CAKE

Code: 42889 / 1x14

❄️ (VE) BLACK FOREST FUDGE CAKE

Code: 41898 / 1x14

❄️ CHOCOLATE FRUIT & NUT SLICE

Code: 40797 / 1x12

❄️ (VE) SALTED CARAMEL BROWNIE

(GF) Code: 13987 / 1x30

❄️ (VE) INDIVIDUAL CHOCOLATE ORANGE

(GF) TARTS Code: 68038 / 1x12

❄️ (VE) INDIVIDUAL SALTED CARAMEL &

(GF) CHOCOLATE TARTS Code: 42099 / 1x12

MINT CHOCOLATE SHARD CAKE

Code: 87539 / 1x14 ❄️





- ❄ SYRUP SPONGE PUDDING
Code: 79094 / 12x130g
- ❄ SYRUP SPONGE PUDDING
Ⓜ GF Code: 9001 / 1x12
- ❄ STICKY TOFFEE PUDDING
Ⓜ GF Code: 32620 / 12x160g
- ❄ CHOCOLATE SPONGE PUDDING
Code: 23604 / 12x130g
- ❄ STRAWBERRY JAM SPONGE PUDDING
Code: 50026 / 12x130g
- ❄ TOFFEE & BUTTERSCOTCH
SPONGE PUDDING
Code: 78201 / 12x130g

- ❄ APPLE CRUMBLE
Ⓜ VE Code: 4022 / 12x175g
- ❄ BLACKBERRY & APPLE CRUMBLE
Ⓜ GF Code: 23459 / 12x175g
- ❄ PREMIUM LEMON SORBET
Code: 62892 / 1x2ltr
- ❄ PREMIUM MANGO SORBET
Code: 56826 / 1x2ltr
- ❄ PREMIUM ORANGE SORBET
Code: 36193 / 1x2ltr
- ❄ PREMIUM RASPBERRY SORBET
Code: 43318 / 1x2ltr



- ❄ STICKY TOFFEE PUDDING
Ⓜ GF Code: 32620 / 12x160g



❄️ PROFITEROLES WITH CHOCOLATE
SAUCE Code: 10904 / 3x24

❄️ CHOCOLATE YULE LOG
Code: 35480 / 2x12

❄️ LEMON MERINGUE ROULADE
Code: 81715 / 2x10ptn

❄️ BLACKFOREST ROULADE
Code: 30692 / 1x2

❄️ RASPBERRY & WHITE CHOCOLATE
ROULADE Code: 65757 / 2x10ptn

10904



35480



STRAWBERRY & PROSECCO
ROULADE Code: 23290 / 2x600g ❄️





54103

❄ RHUBARB & STRAWBERRY CHEESECAKE

GF Code: 54103 / 1x14pp

❄ NEW YORK STYLE CHEESECAKE

GF Code: 33086 / 1x14pp

❄ PROSECCO & BLACKCURRANT
CHEESECAKE

Code: 78516 / 1x12pp

❄ CHOCOLATE BROWNIE CHEESECAKE

Code: 80506 / 1x14pp

❄ STICKY TOFFEE CHEESECAKE

Code: 16542 / 1x14pp

❄ COOKIES & CREAM INDIVIDUAL CHEESECAKES

Code: 40299 / 12x80g



40299



33086



78516



16542

TERRY'S BISCOFF CHEESECAKE

Code: 32768 / 1x16pp ❄



CHEESE

AMBER MIST 🍷
Code: 1758 / 1x200g
Mature Cheddar with Whisky.

BOUNCING BERRY 🍷
Code: 6882 / 1x200g
Mature Cheddar with Cranberries.

TRUFFLE TROVE 🍷
Code: 41266 / 1x150g
Italian Black Summer truffles
with extra mature Cheddar.

BEECHWOOD 🍷
Code: 5586 / 1x200g
Code: 70007 / 1x2kg
Naturally Smoked Mature Cheddar.

PERL LAS
Code: 76772 / 1x200g
Code: 3090 / Av 2.5kg

PERL WEN
Code: 47602 / 1x200g
Code: 6563 / Av 1.2kg

GREEN THUNDER 🍷
Code: 1713 / 1x200g
Cheddar Cheese with Roasted
Garlic & Herbs.

GINGER SPICE 🍷
Code: 4779 / 1x200g
Cheddar with Crystallised Ginger.

PICKLE POWER 🍷
Code: 4957 / 1x200g
Mature Cheddar with Pickled Onion.

RED DEVIL 🍷
Code: 4144 / 1x200g
Red Leicester with Habanero
chillies and peppers.

RED STORM 🍷
Code: 80450 / 1x200g
Vintage Red Leicester.

ROCK STAR 🍷
Code: 23058 / 1x150g
Vintage Cave-Aged Cheddar.

RUBY MIST 🍷
Code: 77041 / 1x200g
Mature Cheddar with Port & Brandy.

1/4 SHROPSHIRE BLUE
CHEESE Code: 1838 / per kg

BLUE STILTON CHEESE
Code: 6518 / 1x1kg

BLUE STILTON SMALL
Code: 3927 / 1x160g



C

CRACKERS & CHUTNEY

JACOBS BISCUITS FOR CHEESE

Code: 1948 / 1x900g

TREGROES SAVOURY CRACKERS

Code: 82313 / 6x12



CATERING ASSORTMENT CRACKERS FOR CHEESE

Code: 57768 / 21x75g

BRAMLEY APPLE & ALE CHUTNEY

Code: 1552 / 1x1.25kg

RED ONION & BALSAMIC VINEGAR CHUTNEY

Code: 8832 / 1x1.15kg

SPICY TOMATO CHUTNEY

Code: 84366 / 1x1.25kg

APRICOT & CRANBERRY CHUTNEY

Code: 51270 / 1x1kg

BEETROOT & HORSERADISH CHUTNEY

Code: 72684 / 1x1.16kg

RED ONION & BALSAMIC VINEGAR CHUTNEY

Code: 8832 / 1x1.15kg



A

AFTER DINNER



MONIN SYRUP 1x700ml
CARAMEL Code: 7785
CHOCOLATE Code: 1276
CINNAMON Code: 7369
FROSTED MINT Code: 74519
GINGERBREAD Code: 9524
HAZELNUT Code: 5497

MONIN SYRUP 1x1ltr
VANILLA Code: 70963

ROMBOUTS CAMELLINO
BISCUITS Code: 9282 / 1x300

ROYAL SPECULOOS BISCUITS
Code: 81508 / 1x300

CAFÉ NUEVA COFFEE BEANS
Code: 40839 / 1x1kg

SEGAFREDO SPECIALE ESPRESSO
COFFEE BEANS Code: 52619 / 1x1kg

ROMBOUTS FILTER COFFEE
Code: 3239 / 6x1kg

ROMBOUTS CAFETIERE COFFEE
SACHETS Code: 5913 / 45x50g

COFFEE FILTER PAPERS
Code: 9884 / 1x50

KENCO FILTER COFFEE WESTMINSTER
3 PINT SACHETS Code: 86775 / 50x60g



C

CRACKERS



10" GOLD & WHITE CRACKERS

Code: 58686 / 1x100

10" Gold and White Crackers containing festive fun puzzles.

9" RED & GREEN SNOWFLAKE CRACKERS

Code: 54616 / 1x100

2 designs, red and green with snowflake pattern containing conversation starter and party games.



11" SILVER SNOWFLAKE CRACKERS

Code: 14557 / 1x100

11" Silver Cracker, includes fun and festive puzzles.



A

ALCOHOL

MULLED WINE
Code: 29253 / 1x3ltr

BARTI SPICED RUM
Code: 36989 / 1x70cl

SEA DRAGON DARK RUM
Code: 73381 / 1x70cl

SEA DRAGON GOLD RUM
Code: 62432 / 1x70cl

SEA DRAGON SPICED RUM
Code: 45220 / 1x70cl

SEA DRAGON WHITE RUM
Code: 59969 / 1x70cl

ABER FALLS ORANGE & MARMALADE GIN
Code: 26934 / 1x70cl

ABER FALLS RHUBARB & GINGER GIN
Code: 54246 / 1x70cl

ABER FALLS WELSH DRY GIN
Code: 39746 / 6x70cl

ABER FALLS MALT WHISKY
Code: 21027 / 6x70cl

MULLED WINE
Code: 29253 / 1x3ltr





Hoffwn ddymuno Nadolig Llawen i'n holl gwsmeriaid
a Blwyddyn Newydd llwyddiannus!

Wishing all of our customers a very Merry Christmas
and every success for the New Year!